

Coarse Change Collection

Interface®

Coarse Change™ Collection

Coarse Change系列共有三款产品,旨在凸显陶器的质感

通过创造充满生机和令人好奇的环境来刺激感官体验。鼓励通过触摸体验,感受周围环境的召唤。

Coarse Change系列共有三种图案可供选择,既可以搭配使用,也可以单独使用。Trace用零碎的线条来表现运动感和流动性,探索粘土制作和雕刻的方式,创造各种设计可能性。Etch的灵感来源于融合材料的烧制过程,通过一种新的形式,将有机和线性图案融合在一起。Facet是一种有机的图案,展示出陶瓷的开裂原理,通过细微的线条雕刻出新的形状,改变了粗糙的纹理。

设计需要应对不断变化的世界。我们设计的模块地毯巧富心思且富有灵活性。这个动态系统贴合空间的灵活演变,鼓励创造性的探索。

我们通过Carbon Neutral Floors™计划,确保Coarse Change系列在整个产品生命周期内都是碳中和的。

Coarse Change is a collection of three products designed to explore the textural nature of ceramics.

Stimulate the senses by creating an environment full of liveliness and curiosity. Encouraging a tactile experience, to feel the urge to explore your surroundings.

Coarse Change Collection has three pattern options that are designed to work together or separately. Trace uses fragmented lines to show movement and flow, exploring how clay can be manipulated and sculpted, creating multiple design possibilities. Etch, inspired by the firing process that fuses materials together to create a new form, allowing organic and linear patterns to blend together. Facet, is an organic pattern that reveals how ceramics crack to create fine, delicate lines. that carve out new shapes and transform the coarse veneer.

Design needs to respond to a changing world. Our modular tiles are designed to be smart and resilient. Allowing spaces to flex and evolve, a dynamic system that encourages creative exploration.

Coarse Change Collection is carbon neutral throughout its full product life cycle through our Carbon Neutral Floors™ Programme.

+正能量空间™

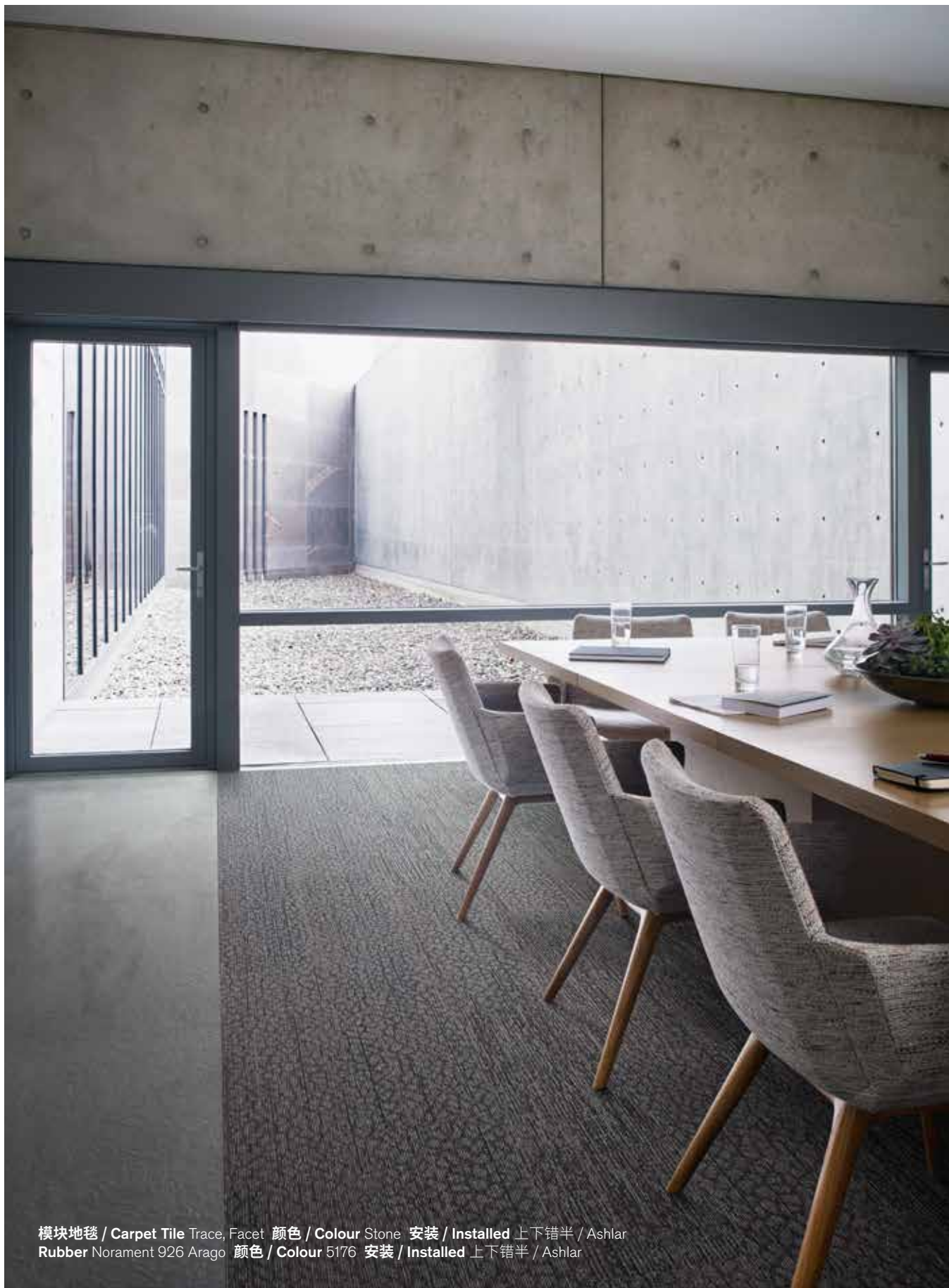
产品更优质,人们更幸福。地球更健康

+Positive spaces™

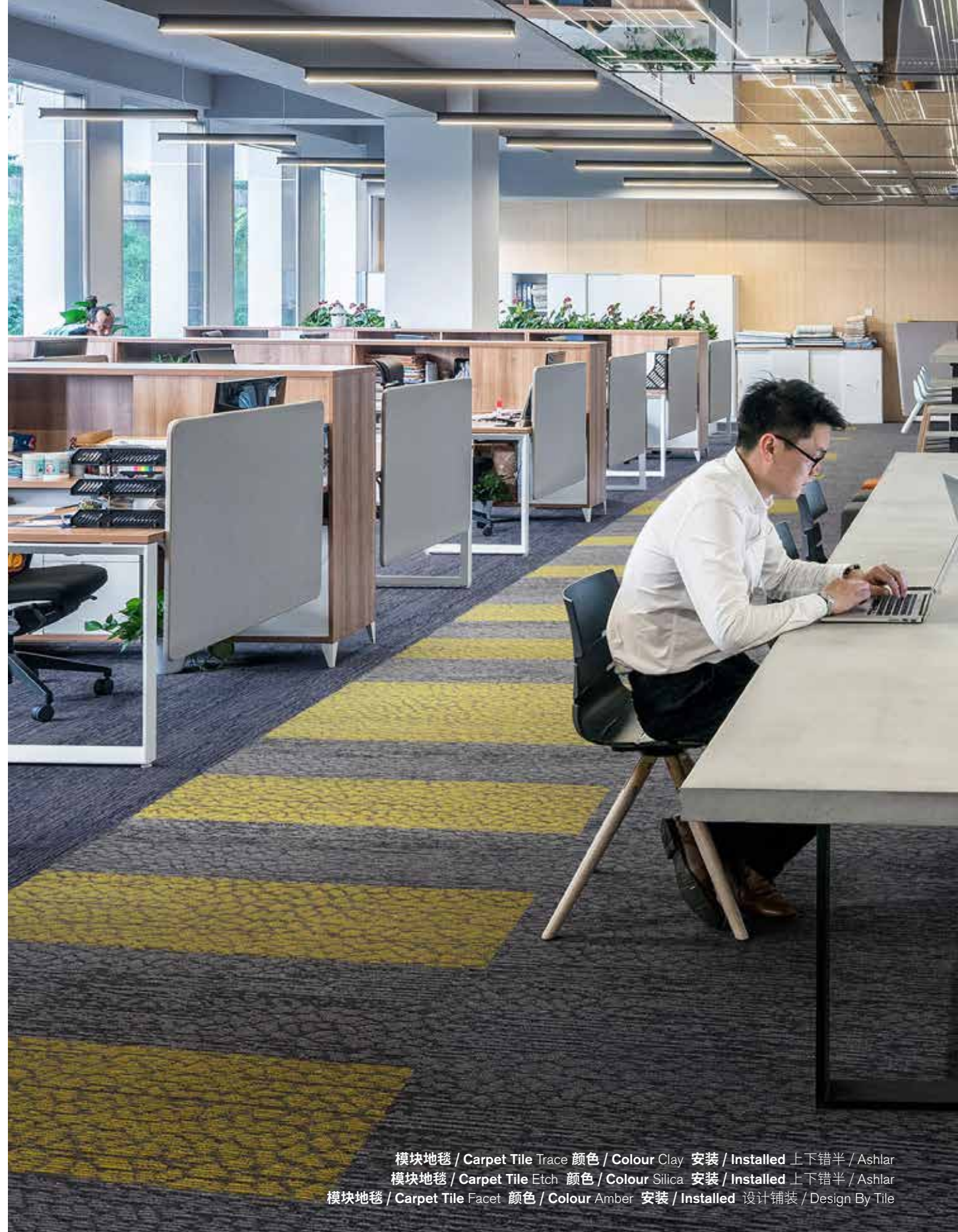
Better products. Happier people. Healthier planet.







模块地毯 / Carpet Tile Trace, Facet 颜色 / Colour Stone 安装 / Installed 上下错半 / Ashlar
Rubber Norament 926 Arago 颜色 / Colour 5176 安装 / Installed 上下错半 / Ashlar



模块地毯 / Carpet Tile Trace 颜色 / Colour Clay 安装 / Installed 上下错半 / Ashlar
模块地毯 / Carpet Tile Etch 颜色 / Colour Silica 安装 / Installed 上下错半 / Ashlar
模块地毯 / Carpet Tile Facet 颜色 / Colour Amber 安装 / Installed 设计铺装 / Design By Tile





模块地毯 / Carpet Tile Facet 颜色 / Colour Lapis 安装 / Installed 上下错半 / Ashlar
LVT Brushed Lines 颜色 / Colour Graphite 安装 / Installed 上下错半 / Ashlar



模块地毯 / Carpet Tile Trace 颜色 / Colour Citrine 安装 / Installed 上下错半 / Ashlar
LVT Natural Woodgrains 颜色 / Colour Beech 安装 / Installed 上下错半 / Ashlar



模块地毯 / Carpet Tile Trace, Etch 颜色 / Colour Sand 安装 / Installed 上下错半 / Ashlar
模块地毯 / Carpet Tile Trace, Etch, Facet 颜色 / Colour Earthen 安装 / Installed 上下错半 / Ashlar
模块地毯 / Carpet Tile Etch, Facet 颜色 / Colour Stone 安装 / Installed 上下错半 / Ashlar



模块地毯 / Carpet Tile Etoh 颜色 / Colour Iris, Silica 安装 / Installed 上下错半 / Ashlar

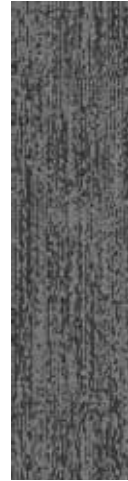


模块地毯 / Carpet Tile Facet 颜色 / Colour Beryl 安装 / Installed 上下错半 / Ashlar
模块地毯 / Carpet Tile Trace 颜色 / Colour Kaolin, Marl 安装 / Installed 上下错半 / Ashlar

Neutrals



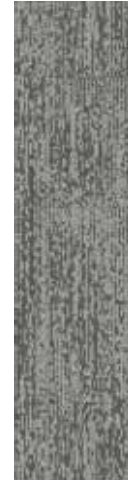
2487-001-000
Earthen



2487-002-000
Stone



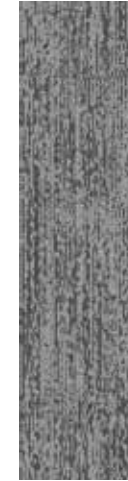
2487-003-000
Sand



2487-004-000
Kaolin



2487-005-000
Feldspar



2487-006-000
Marl



2487-007-000
Silica

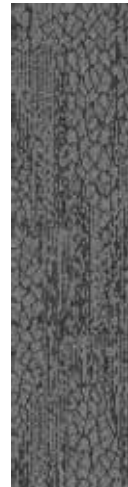


2487-008-000
Clay

Trace



2488-001-000
Earthen



2488-002-000
Stone



2488-003-000
Sand



2488-004-000
Kaolin



2488-005-000
Feldspar



2488-006-000
Marl



2488-007-000
Silica

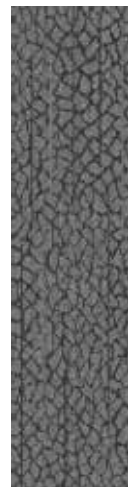


2488-008-000
Clay

Etch



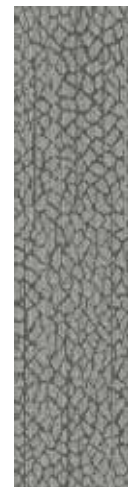
2489-001-000
Earthen



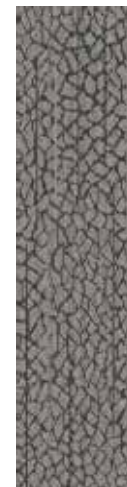
2489-002-000
Stone



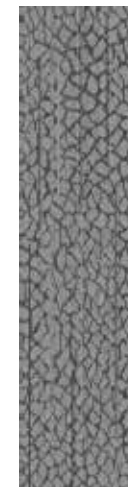
2489-003-000
Sand



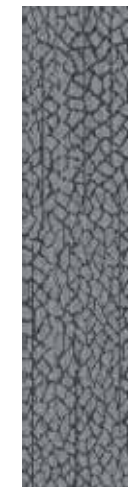
2489-004-000
Kaolin



2489-005-000
Feldspar



2489-006-000
Marl



2489-007-000
Silica



2489-008-000
Clay

Facet

Neutrals 3种图案的渲染图 / Rendered view of the 3 patterns



Trace



Etch



Facet

Brights



2487-009-000
Lapis



2487-010-000
Iris



2487-011-000
Cinnabar



2487-012-000
Citrine



2487-013-000
Amber



2487-014-000
Beryl

Trace



2488-009-000
Lapis



2488-010-000
Iris



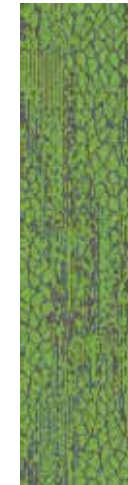
2488-011-000
Cinnabar



2488-012-000
Citrine

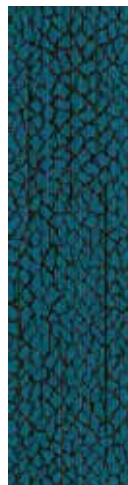


2488-013-000
Amber



2488-014-000
Beryl

Etch



2489-009-000
Lapis



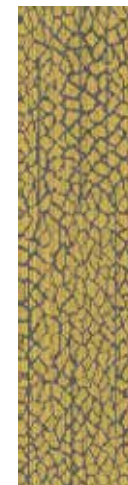
2489-010-000
Iris



2489-011-000
Cinnabar



2489-012-000
Citrine



2489-013-000
Amber



2489-014-000
Beryl

Facet

Brights 3种图案的渲染图 / Rendered view of the 3 patterns



Trace



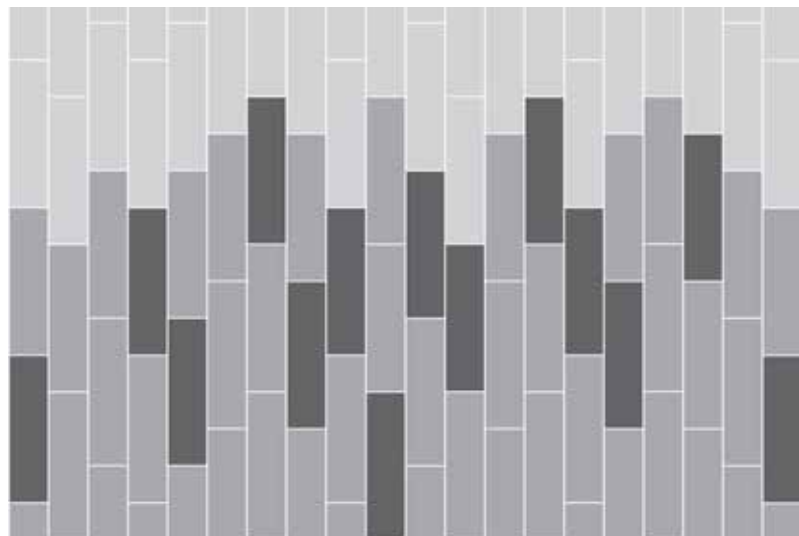
Etch



Facet

设计方案 以下为建议铺装方式, 本手册中的图片具体展示了设计方案

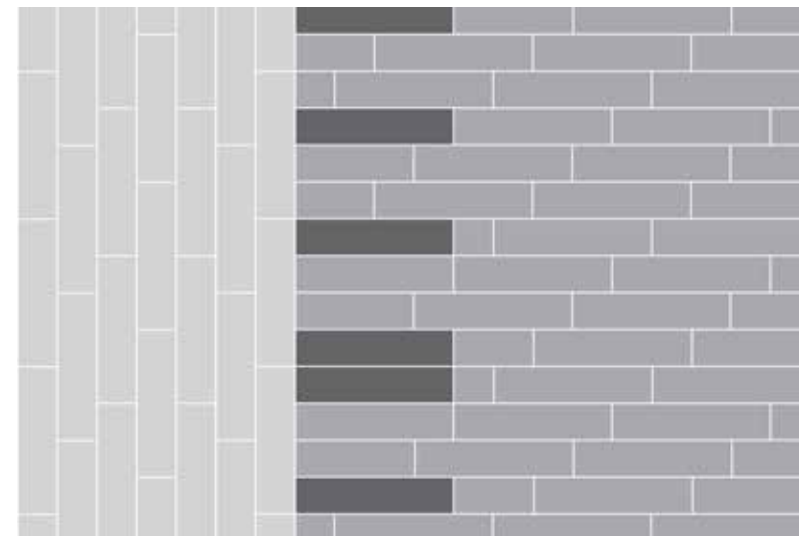
Design Ideas Below are floor layouts showing how to create the design ideas shared in several of the images featured in this brochure.



■ 模块地毯 / Carpet Tile Facet
尺寸 / Size 25cm x 1m
颜色 / Colour Beryl
安装 / Installed 上下错半 / Ashlar

■ 模块地毯 / Carpet Tile Trace
尺寸 / Size 25cm x 1m
颜色 / Colour Kaolin
安装 / Installed 上下错半 / Ashlar

■ 模块地毯 / Carpet Tile Trace
尺寸 / Size 25cm x 1m
颜色 / Colour Marl
安装 / Installed 上下错半 / Ashlar



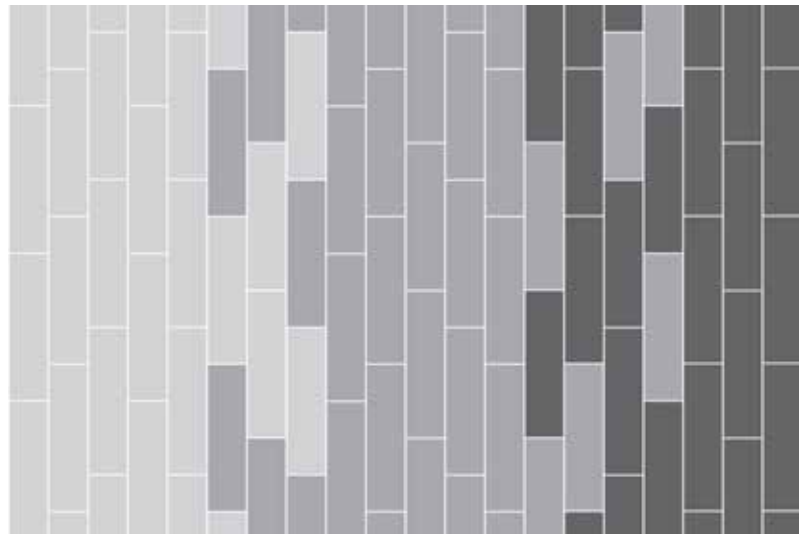
■ 模块地毯 / Carpet Tile Trace
尺寸 / Size 25cm x 1m
颜色 / Colour Clayl
安装 / Installed 上下错半 / Ashlar

■ 模块地毯 / Carpet Tile Etch
尺寸 / Size 25cm x 1m
颜色 / Colour Silica
安装 / Installed 上下错半 / Ashlar

■ 模块地毯 / Carpet Tile Facet
尺寸 / Size 25cm x 1m
颜色 / Colour Amber
安装 / Installed 设计铺装 / Design By Tile

设计方案 以下为建议铺装方式, 本手册中的图片具体展示了设计方案

Design Ideas Below are floor layouts showing how to create the design ideas shared in several of the images featured in this brochure.



■ **模块地毯 / Carpet Tile** Trace, Etch
尺寸 / Size 25cm x 1m
颜色 / Colour Sand
安装 / Installed 上下错半 / Ashlar

■ **模块地毯 / Carpet Tile** Trace, Etch, Facet
尺寸 / Size 25cm x 1m
颜色 / Colour Earthen
安装 / Installed 上下错半 / Ashlar

■ **模块地毯 / Carpet Tile** Etch, Facet
尺寸 / Size 25cm x 1m
颜色 / Colour Stone
安装 / Installed 上下错半 / Ashlar

技术参数 / Specifications

Trace

Style Code	2487
Product Construction	Tufted Textured Loop
Yarn System	100% Solution Dyed Nylon
Machine Gauge	1/12
Pile Thickness	2.0mm (± 0.5mm)
Total Thickness	5.0mm (± 0.5mm)
Tile Size	25x100cm
Area of Use	Commercial - Heavy Use
Lifetime Antimicrobial	Intersept®
Soil/Stain Protection	Protekt2®
Installation Methods	Ashlar



ASHLAR

Etch

Style Code	2488
Product Construction	Tufted Textured Loop
Yarn System	100% Solution Dyed Nylon
Machine Gauge	1/12
Pile Thickness	2.0mm (± 0.5mm)
Total Thickness	5.0mm (± 0.5mm)
Tile Size	25x100cm
Area of Use	Commercial - Heavy Use
Lifetime Antimicrobial	Intersept®
Soil/Stain Protection	Protekt2®
Installation Methods	Ashlar



ASHLAR

Facet

Style Code	2489
Product Construction	Tufted Textured Loop
Yarn System	100% Solution Dyed Nylon
Machine Gauge	1/12
Pile Thickness	2.0mm (± 0.5mm)
Total Thickness	5.0mm (± 0.5mm)
Tile Size	25x100cm
Area of Use	Commercial - Heavy Use
Lifetime Antimicrobial	Intersept®
Soil/Stain Protection	Protekt2®
Installation Methods	Ashlar



ASHLAR

Trace

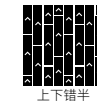
产品型号	2487
产品结构	圈绒
纱线系统	100%原液染色尼龙
簇绒机器规格	1/12
毯毛厚度	2.0mm (± 0.5mm)
总厚度	5.0mm (± 0.5mm)
地毯尺寸	25x100cm
使用范围	商业--大量使用
终身抗菌	Intersept®
抗污防护	Protekt 2®
安装方式	上下错半



上下错半

Etch

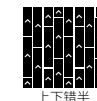
产品型号	2488
产品结构	圈绒
纱线系统	100%原液染色尼龙
簇绒机器规格	1/12
毯毛厚度	2.0mm (± 0.5mm)
总厚度	5.0mm (± 0.5mm)
地毯尺寸	25x100cm
使用范围	商业--大量使用
终身抗菌	Intersept®
抗污防护	Protekt 2®
安装方式	上下错半



上下错半

Facet

产品型号	2489
产品结构	圈绒
纱线系统	100%原液染色尼龙
簇绒机器规格	1/12
毯毛厚度	2.0mm (± 0.5mm)
总厚度	5.0mm (± 0.5mm)
地毯尺寸	25x100cm
使用范围	商业--大量使用
终身抗菌	Intersept®
抗污防护	Protekt2®
安装方式	上下错半



上下错半

英特飞在亚太地区的所有制造工厂都通过了 ISO 9001质量管理体系和ISO 14001环境管理体系的认证。

All Interface manufacturing facilities in the Asia Pacific region maintain registration to ISO 9001 Quality Management Systems and ISO 14001 Environmental Management Systems.

产品规格可能会受到实际生产公差的影响, 且可能会随时更新, 恕不另行通知。不同生产批次的少许偏差实属正常, 应纳入整体安装规划的考虑范围。产品质保以生产商提供的书面质保文件为准。所有其他保证, 包括但不限于有关适用于特定用途、适销性或适用性的默示保证, 本公司概不负责。敬请联系您的销售代表, 获得书面质保文件。

Production specifications are subject to normal manufacturing tolerances and may be changed without notice. Slight variation in colour among different production lots are normal and should be considered in the overall installation plan. Products covered by manufacturer's written warranty only. All other warranties, including without limitation any implied warranties of merchantability or fitness for particular purpose, are hereby disclaimed. Contact your representative for written warranty information.



Carbon Neutral Floors™



www.interface.com.cn

上海工作室 / Shanghai Studio

英特飞中国 / Interface China
电话 / Tel: 86-21-6340 3868
www.interface.com.cn

香港工作室 / Hongkong Studio

英特飞中国 / Interface China
电话 / Tel: 852-2802 0838
www.interface.com.cn

北京工作室 / Beijing Studio

英特飞中国 / Interface China
电话 / Tel: 86-10-6590 7810
www.interface.com.cn

太仓生产基地 / Taicang Plant

英特飞中国 / Interface China
电话 / Tel: 86-512- 5373 9888
www.interface.com.cn

广州工作室 / Guangzhou Studio

英特飞中国 / Interface China
电话 / Tel: 86-139 2645 4400
www.interface.com.cn

东南亚 / South East Asia

英特飞亚洲 / Interface Asia
电话 / Tel: 65-6478 1510
www.interface.com

韩国 / South Korea

电话 / Tel: 82-2-555 1734
www.interface.com

日本 / Japan

英特飞日本 / Interface Japan
电话 / Tel: 81-3-5733 5211
www.interface.com

澳大利亚 / Australia

英特飞澳大利亚 / Interface Australia
本地免费电话 / Local toll free: 1800 804 361
www.interface.com.au

印度 / India

英特飞印度 / Interface India
电话 / Tel: 91-80-4613 1313

03/2021
SF0128T0



气候变化无可争辩。但我们可以扭转这种局面。我们的任务是落实行动。加入#气候回归计划，助力营造宜居气候。

Climate change is undeniable. And reversible. Our mission is to prove it. **Join the #ClimateTakeBack and help create a climate fit for life.**